

TORUS 1000 DUAL FUEL

Category II or Category IV Appliance

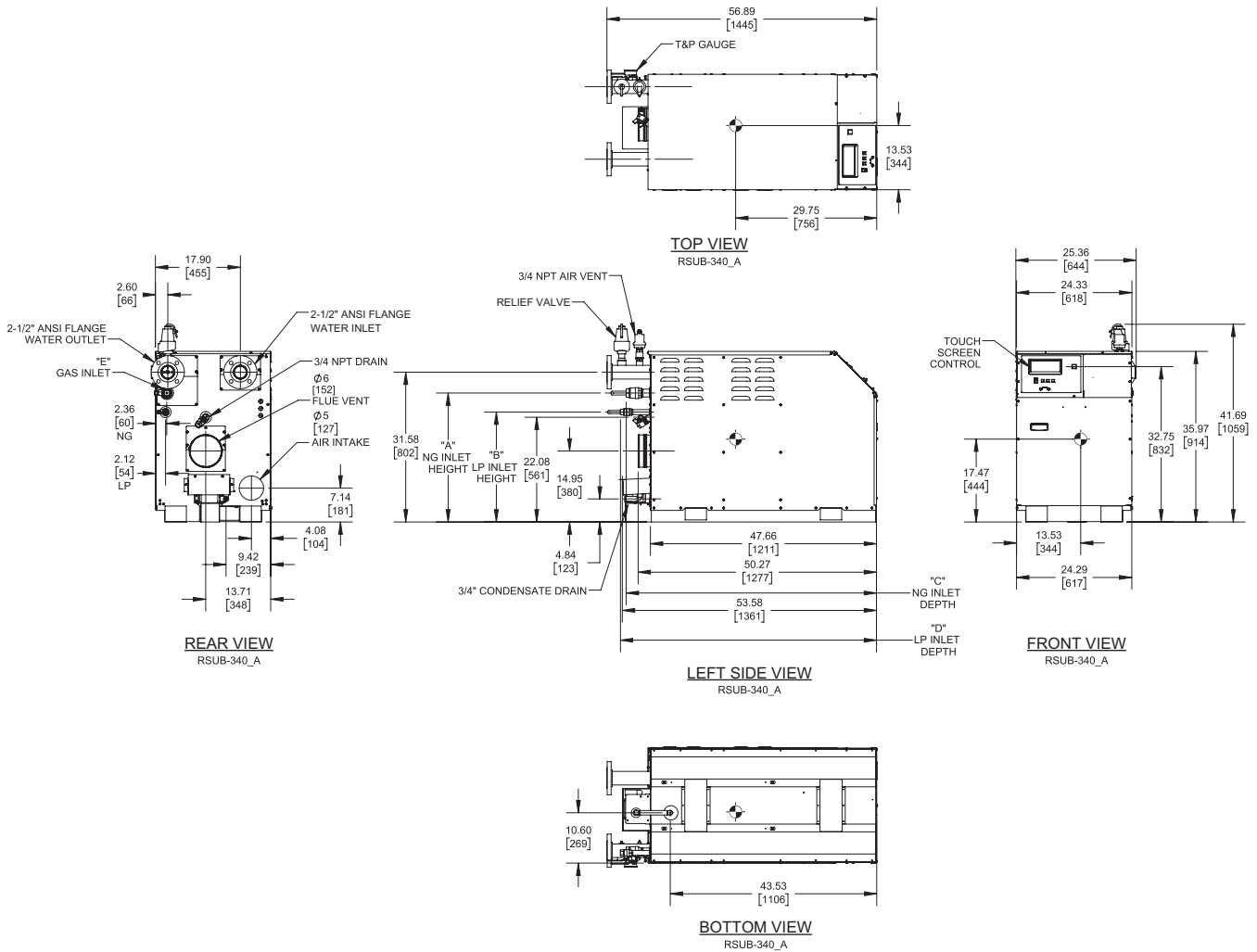
(see Installation and Operation Manual for venting information)

CODE OPTIONS


CSD-1

FIRMWARE W/REMOTE
TEST MANUAL RESET LWCO
High and Low Gas Pressure Switches

INDOOR UNIT



Notes:

1. Dimensions are approximate and should not be used to "rough-in" equipment.
2. Dimensions are subject to change without notice.
3. All dimensions are in inches (mm).
4.  Symbol indicates center of gravity.

GAS OPTION	"A"	"B"	"C"	"D"	"E"
NG	27.17 in / 690.12 mm	-	52.79 in / 1340.9 mm	-	1 1/4 NPT
LP	-	23.16 in / 588.26 mm	-	53.99 in / 1371.3 mm	3/4 NPT

BOILER CERTIFIED RATINGS & CAPACITIES

Fuel Type	Natural/Propane Gas	Boiler FLA	12.0*
Input BTU/hr.	999,000 / 292.77 kW	Boiler HP	28.65
Output BTU/hr.	959,040 / 281.067 kW	Min. Gas Pressure Required	4"W.C.
Electrical Requirements	120 VAC/60 Hz/1PH	Max. Gas Pressure Allowed	14" W.C.
		Operating Weight	620.25 lbs / 281.34 kg

BOILER TRIM & CONTROLS

Main Gas Valve	Dungs MBC	Air Switch	Huba
Firing Valve	Apollo	Flow Switch	SIKA
Ignition Control	Fenwal	Blocked Flue Switch	Cleveland NS2
Operating Control	HeatNet®	Blower Motor	Ametek
High Limit	Jumo	L.W.C.O.	800
Main Ball Valve	Apollo	Relief Valve (WB)	3/4" x 1" set @ 50 psi
Pump contactor strongly recommended for water heater applications.		Relief Valve (WW)	1" x 1" set @ 125 psi

A.S.M.E.

ASME Sect IV Fire Side	75.4 Sq. Ft. / 7.00 Sq. M.	Design Data	Max. 160 psig & 210°F
Htg Surface		Water Volume	8.1 gal. / 30.66 Liters
ASME Sect IV Water Side	68.24 Sq. Ft. / 6.34 Sq. M.	pH Level	6.5-8.5
Htg Surface			

* Add circulator amps.

BOILER TEMPERATURE RISE / PRESSURE DROP (Based on Full Input)

20°F / 11.1°C				30°F / 16.7°C				40°F / 22.2°C			
Flow Rate		Pressure Drop		Flow Rate		Pressure Drop		Flow Rate		Pressure Drop	
GPM	L/s	Ft	kPa	GPM	L/s	Ft	kPa	GPM	L/s	Ft	kPa
95.9	6.1	16.2	48.3	64.0	4.0	7.2	21.5	48.0	3.0	4.1	12.2


Flow GPM (Boiler)		Temp. Rise (°F) (Boiler**)		Vent Length (Equiv. Ft.)		Air Inlet Length (Equiv. Ft.)	
Min	Max	Min	Max	Min	Max	Min	Max
48.0	95.9	20	40	6	100	0	100

** Min/Max delta t reflects boiler operation at full input. For applications requiring operation above/below these parameters please consult factory.

WATER HEATER HOURLY RECOVERY CAPACITY (GPH & LPH)

40°F	22°C	60°F	33°C	80°F	44°C	100°F	56°C	120°F	67°C	140°F	78°C
2908	10993	1939	7329	1454	5497	1163	4397	969	3664	831	3141

Water Heater Min Flow Rates							
Normal (4 to 12) gpg				Hard (12 to 15) gpg			
Flow Rate		Pressure Drop		Flow Rate		Pressure Drop	
gpm	L/s	Ft	kPa	gpm	L/s	Ft	kPa
73.4	4.6	9.5	28.3	97.9	6.2	16.8	50.3

REP FIRM	_____	<div>TORUS 1000 DUAL FUEL</div> <div>Category II or Category IV Appliance (see Installation and Operation Manual for venting information)</div> <div>  RELIABLE. BOLD. INNOVATIVE. </div> <div>A Division of Mestek, Inc. Westfield, MA 01085 (833) 265-5371</div>
SUBMITTED BY	_____	
JOB NAME	_____	
ARCHITECT	_____	
ENGINEER	_____	
CONTRACTOR	_____	
DATE	_____	

TORUS 1000 DUAL FUEL

Category II or Category IV Appliance

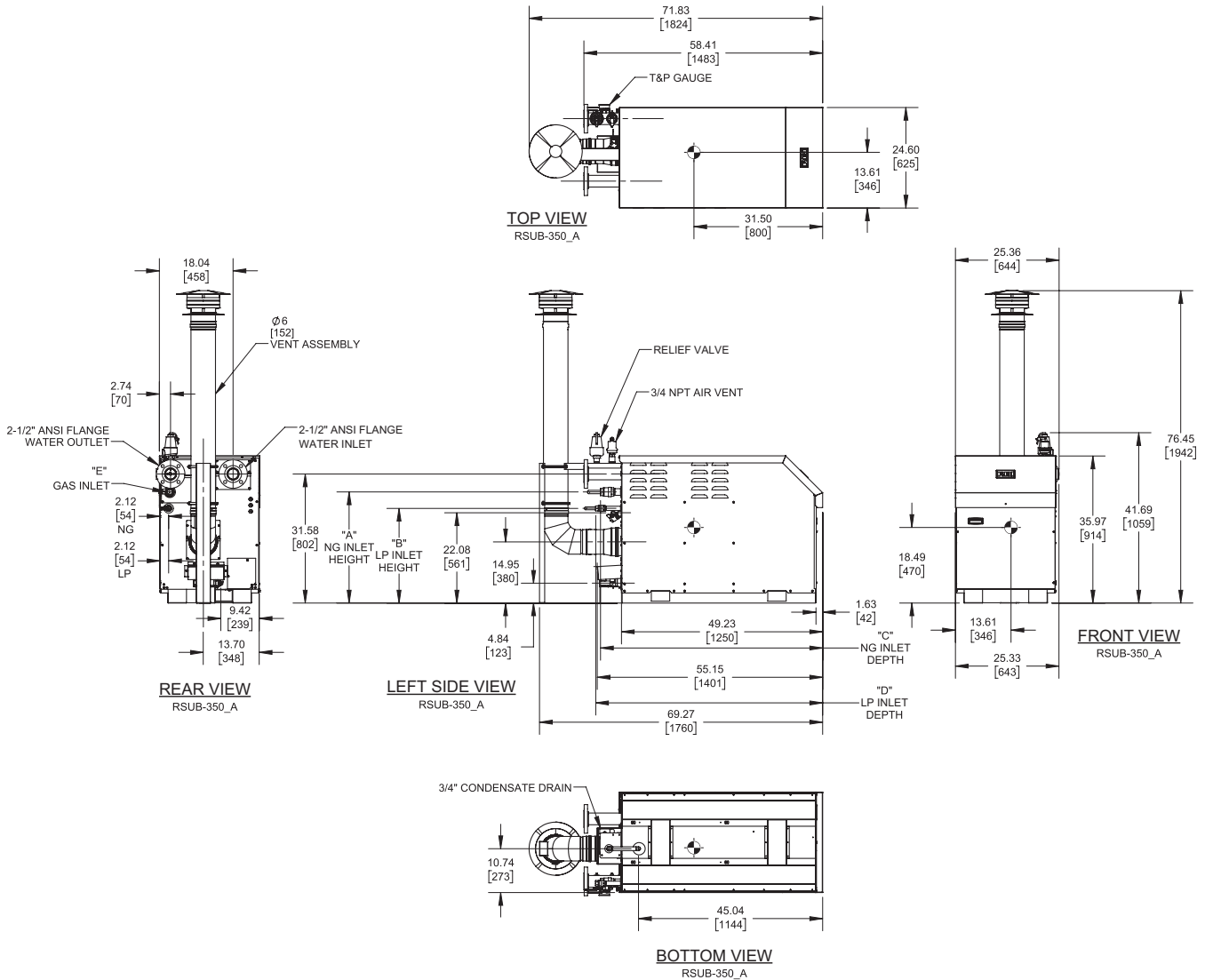
(see Installation and Operation Manual for venting information)

CODE OPTIONS


CSD-1

FIRMWARE W/REMOTE
TEST MANUAL RESET LWCO
High and Low Gas Pressure Switches

OUTDOOR UNIT



Notes:

1. Dimensions are approximate and should not be used to "rough-in" equipment.
2. Dimensions are subject to change without notice.
3. All dimensions are in inches (mm).
4.  Symbol indicates center of gravity.

GAS OPTION	"A"	"B"	"C"	"D"	"E"
NG	27.17 in / 690.12 mm	-	54.35 in / 1380.5 mm	-	1 1/4 NPT
LP	-	23.16 in / 588.26 mm	-	55.53 in / 1410.5 mm	3/4 NPT

BOILER CERTIFIED RATINGS & CAPACITIES

Fuel Type	Natural/Propane Gas	Boiler FLA	12.0*
Input BTU/hr.	999,000 / 292.77 kW	Boiler HP	28.65
Output BTU/hr.	959,040 / 281.067 kW	Min. Gas Pressure Required	4"W.C.
Electrical Requirements	120 VAC/60 Hz/1PH	Max. Gas Pressure Allowed	14" W.C.
		Operating Weight	654.85 lbs / 297.03 kg

BOILER TRIM & CONTROLS

Main Gas Valve	Dungs MBC	Air Switch	Huba
Firing Valve	Apollo	Flow Switch	SIKA
Ignition Control	Fenwal	Blocked Flue Switch	Cleveland NS2
Operating Control	HeatNet®	Blower Motor	Ametek
High Limit	Jumo	L.W.C.O.	800
Main Ball Valve	Apollo	Relief Valve (WB)	3/4" x 1" set @ 50 psi
Pump contactor strongly recommended for water heater applications.		Relief Valve (WW)	1" x 1" set @ 125 psi

A.S.M.E.

ASME Sect IV Fire Side	75.4 Sq. Ft. / 7.00 Sq. M.	Design Data	Max. 160 psig & 210°F
Htg Surface		Water Volume	8.1 gal. / 30.66 Liters
ASME Sect IV Water Side	68.24 Sq. Ft. / 6.34 Sq. M.	pH Level	6.5-8.5
Htg Surface			

* Add circulator amps.

BOILER TEMPERATURE RISE / PRESSURE DROP (Based on Full Input)

20°F / 11.1°C				30°F / 16.7°C				40°F / 22.2°C			
Flow Rate		Pressure Drop		Flow Rate		Pressure Drop		Flow Rate		Pressure Drop	
GPM	L/s	Ft	kPa	GPM	L/s	Ft	kPa	GPM	L/s	Ft	kPa
95.9	6.1	16.2	48.3	64.0	4.0	7.2	21.5	48.0	3.0	4.1	12.2
Flow GPM (Boiler)		Temp. Rise (°F) (Boiler**)		Vent Length (Equiv. Ft.)		Air Inlet Length (Equiv. Ft.)					
Min	Max	Min	Max	Min	Max	Min	Max	Min	Max	Min	Max
48.0	95.9	20	40	Factory Supplied				0			

** Min/Max delta t reflects boiler operation at full input. For applications requiring operation above/below these parameters please consult factory.

WATER HEATER HOURLY RECOVERY CAPACITY (GPH & LPH)

40°F	22°C	60°F	33°C	80°F	44°C	100°F	56°C	120°F	67°C	140°F	78°C
2908	10993	1939	7329	1454	5497	1163	4397	969	3664	831	3141

Water Heater Min Flow Rates

Normal (4 to 12) gpg				Hard (12 to 15) gpg			
Flow Rate		Pressure Drop		Flow Rate		Pressure Drop	
gpm	L/s	Ft	kPa	gpm	L/s	Ft	kPa
73.4	4.6	9.5	28.3	97.9	6.2	16.8	50.3

REP FIRM _____
SUBMITTED BY _____
JOB NAME _____
ARCHITECT _____
ENGINEER _____
CONTRACTOR _____
DATE _____

TORUS 1000 DUAL FUEL

Category II or Category IV Appliance
 (see Installation and Operation Manual for venting information)



A Division of Mestek, Inc.
 Westfield, MA 01085
 (833) 265-5371